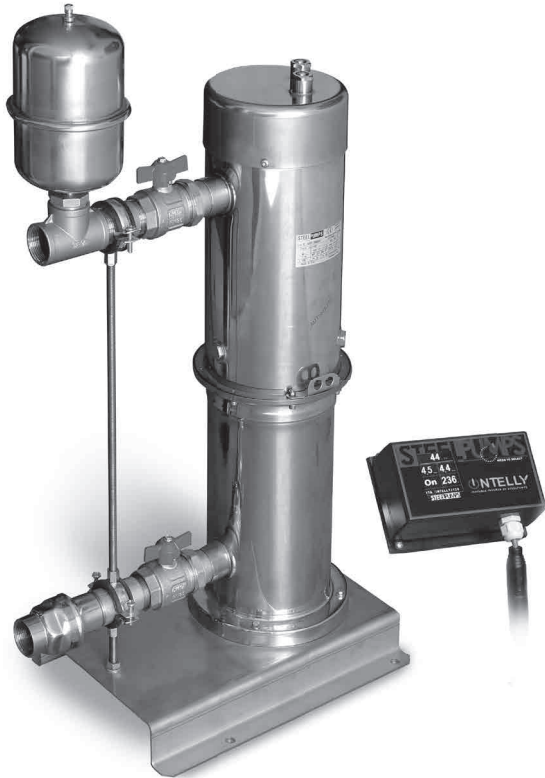


ONEINTELLY V

Electronic booster set with one inverter controlled pump



Description

ONEINTELLY booster set with inverter technology, built with one pump. Each pump has integrated the INTELLY system and communicates each other thanks to a special connection. The ONEINTELLY booster set is allows to keep the constant pressure in the installation, reducing the pendulum phenomena typical of pressure switch systems. However, a correct design and construction system cannot regardless of the installation of a hydroaccumulation tank membrane (not included in the supply) having purpose of damping small withdrawals from the system. The start and stop in controlled ramp of engine laps avoids water hammers. It's not necessary the qualified personnel due to the easy programming.

Applications

- Water pressurization
- Residential, commercial buildings
- Hotel facilities
- Industrial systems
- Hospitals

Pumped liquid:

Clean water without any abrasive or suspended solids

Liquid temperature $+2^{\circ}\text{C} \div +40^{\circ}\text{C}$

Air temperature Max $+45^{\circ}\text{C}$

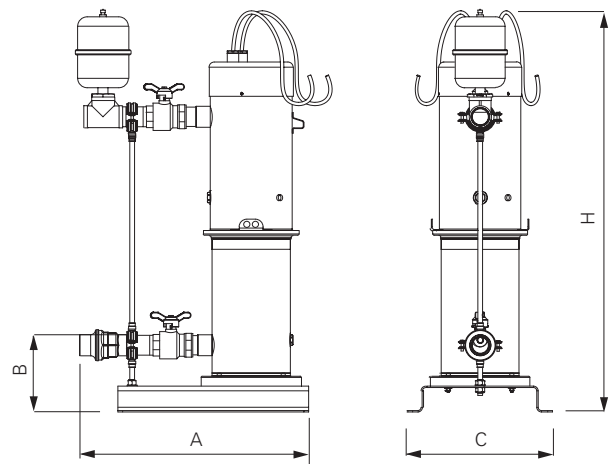
Ignition pressure calibration (to be set)

Characteristics

- Protection against dry running
- Overcurrent protection
- IP68 pump protection class
- Graphic display to visualize and adjust the parameters
- Alternating pump start system
- Storage of alarms for external investigation
- Stainless steel expansion tank 2 lt

Materials

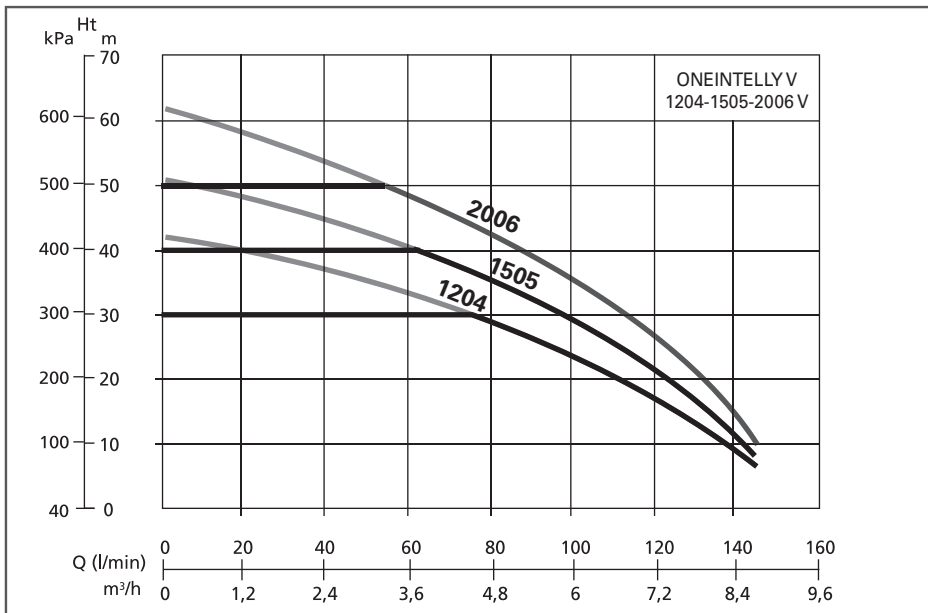
- Motor body and pump body in AISI 304
- Motor flanges in brass
- Brass check valves
- Motor shaft in AISI 420
- Diffusers and impellers in Noryl (1204 – 1505 – 2006)
- Intake and delivery manifold in AISI 304
- Pump support base in AISI 304
- Plastic flow sensor



Code	P ₂ Nom.		Stages	Q (l/m) FLOW								Dimensions mm						Weight Kg
	kW	Hp		0	30	50	70	100	120	145	A	B	C	H	DNM	DNA		
				Total Hm in CA														
ONEINTELLY 1204V	0,90	1,2	4	43	38	34	30	24	16	6	480	110	300	680	2"	2"	31	
ONEINTELLY 1505V	1,10	1,5	5	51	46	43	38	30	21	9	480	110	300	890	2"	2"	33	
ONEINTELLY 2006V	1,50	2,0	6	62	55	51	45	34	24	10	480	110	300	890	2"	2"	34	

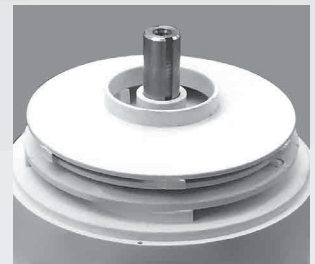


Curves and performance $\eta = 2900$ 1/min



INTELLY Control Panel
With fast connector

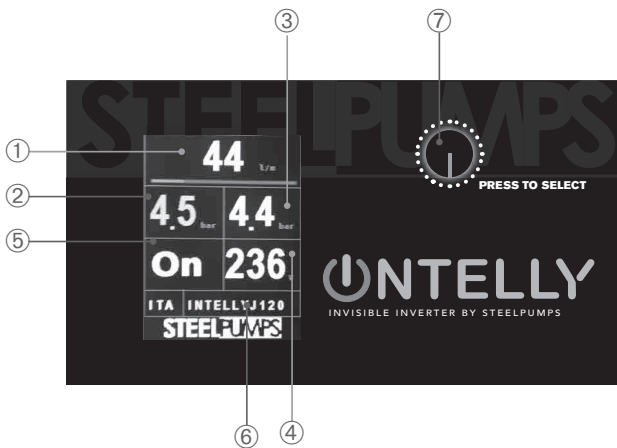
- Work value setting
- System diagnostics
- Historical memory
- Monitoring



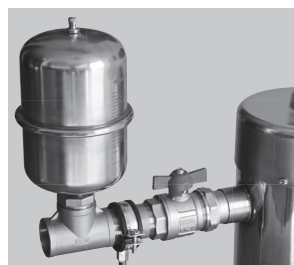
Technopolymer impeller



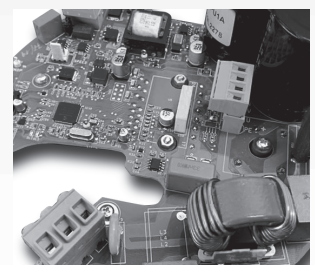
Brass motor support



- 1 - Flow detected
- 2 - Pressure detected
- 3 - Set pressure (Fail Safe)
- 4 - Supply voltage
- 5 - Pump status
- 6 - Pump model
- 7 - Programming button



Stainless steel expansion tank



Electronic board