

XAJE 24 SD



Self-priming Jet centrifugal pump with electronic system 24V



Technopolymer check valve with flow control disc and spring in AISI 316 (standard equipment in automatic version)

Description

Up/Down technology for submersed, surface or underground installation.
Automatic system of water supply and dry-running protection.
Antiblocking system every 72 hours of pump inactivity.
Protection rating IP 68.

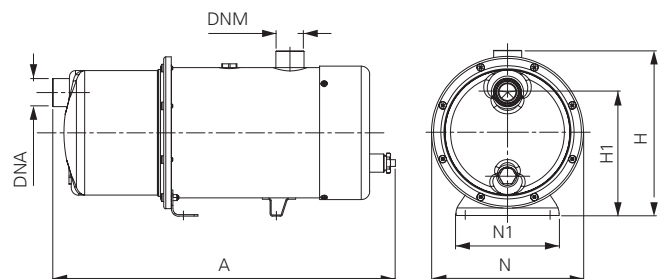
Applications

- Boat boosting
- Temporary installations
- Tank drainage
- Hydraulic systems powered by solar energy
- Pressurization station for electrically powered utilities with rechargeable batteries

Pumped liquid:
Clean water with no abrasive or suspended solids
Liquid temperature $+2^{\circ}\text{C} \div +40^{\circ}\text{C}$
Air temperature max $+45^{\circ}\text{C}$
Depth max 5 m
Calibrating pressure rate switch 2.2 bar

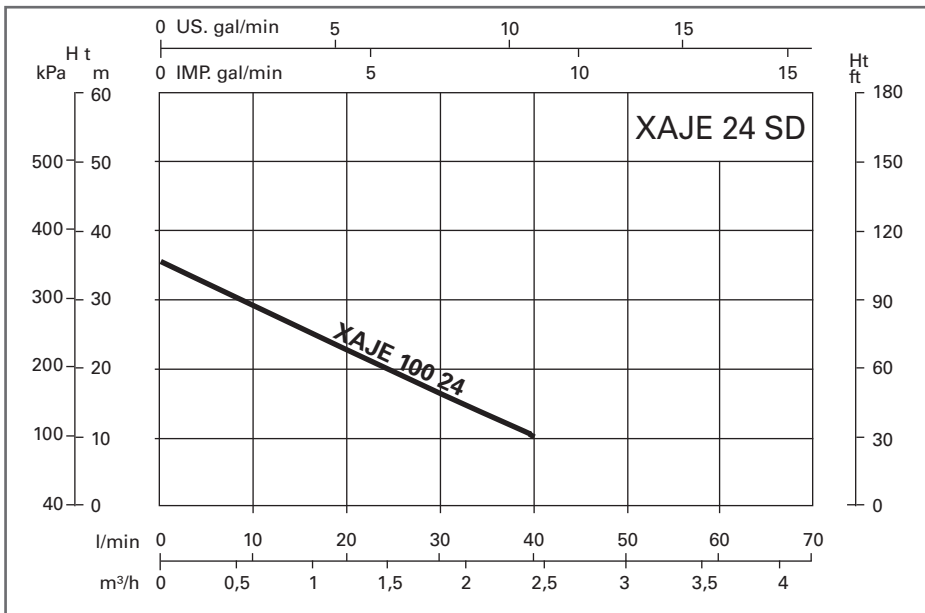
Materials

- Motor body and pump body: Stainless steel AISI 304
- Brass flange
- Shaft: Stainless steel AISI 420
- Diffuser, impeller and venturi Jet: Noryl
- Basis: Stainless steel AISI 304
- Dumping feet: Rubber
- Mechanical seal: Graphite / ceramic and oil chamber
- A2 Stainless steel bolts
- NBR70 O-ring
- H07RN-F Electric cable 2x6 mm² 5 m
- Tropicalized circuit board in compliance with the RoHS directive
- Class F insulated motors
- DC motors / permanent magnets



AUTO MONO	Code	P ₂ Nom.		Low voltage 24 V		Q (lit/m) Flow						Dimensions mm						Wgt. kg		
		kW	Hp	Volt	Amp	0	10	20	30	40	50	60	A	N	H	H1	N1		DNM	DNA
						Total Hm in CA														
	XAJE10024SD	0,45	0,6	24	29	40	33	30	24	20	15	-	447	200	226	163	136	1 1/4"	1"	15

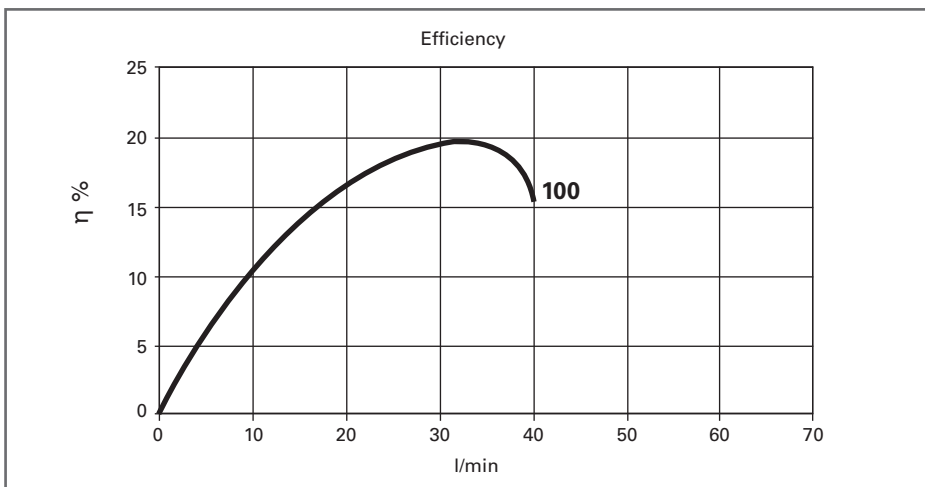
Curves and performance $\eta = 2900$ 1/min



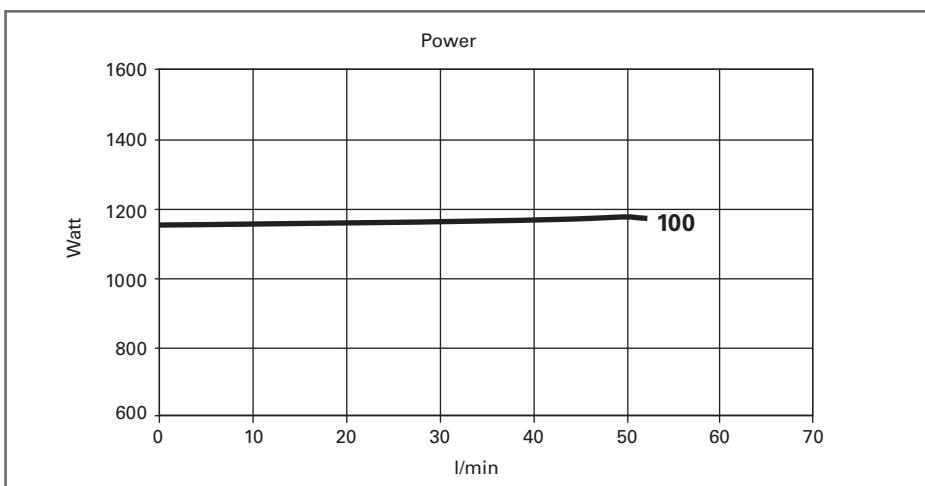
Technopolymer impeller



Front boot



Motor body with delivery port



Brass motor support

XAJV P



Self-priming Jet centrifugal pump with electronic system

Description

Up/Down technology for submersed, surface or underground installation. Automatic system of water supply; dry-running protection. Antilocking system every 72 hours of pump inactivity. Protection rating IP 68.

Technopolymer check valve with flow control disc and spring in AISI 316 assembled.



Materials

- Motor body: Stainless steel AISI 304
- Technopolymer flange and pump body
- Shaft: Stainless steel AISI 420
- Diffuser, impeller and venturi Jet: Noryl
- Rear cap: Polypropylene
- Basis: Stainless steel AISI 304
- Dumping feet: Rubber
- Mechanical seal: Graphite / ceramic
- Oil chamber on the mechanical seal
- A2 Stainless steel bolts
- NBR70 O-ring
- H07RN8-F Electric cable 10m length with Schuko plug
- Tropicalized circuit board in compliance with the RoHS directive
- Class F insulated motors

Applications

- Domestic boosting
- Medium sprinkling and surface irrigations
- Tank drainage and transfers
- Industrial washing and cooling
- Systems for potable water treatment

Pumped liquid:

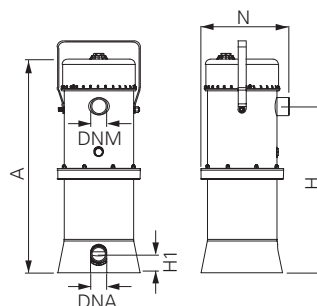
Clean water with no abrasive or suspended solids

Liquid temperature +2°C ÷ +40°C

Air temperature max +45°C

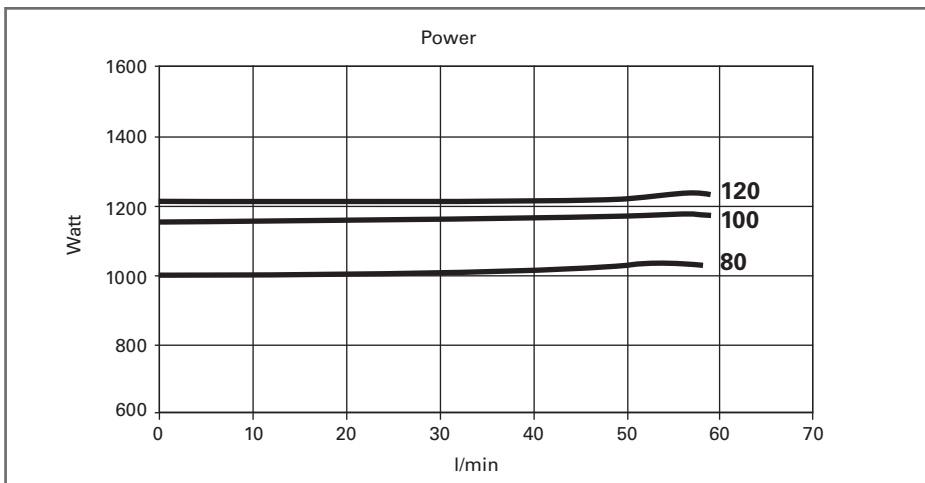
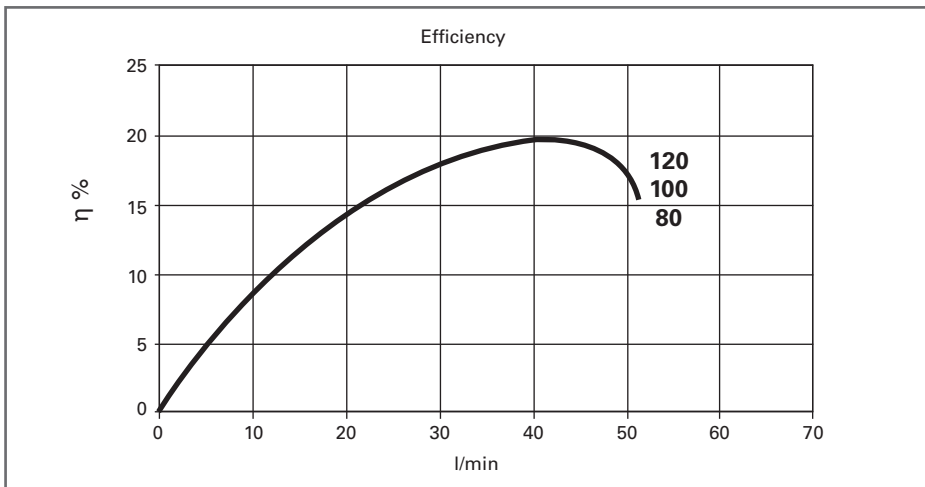
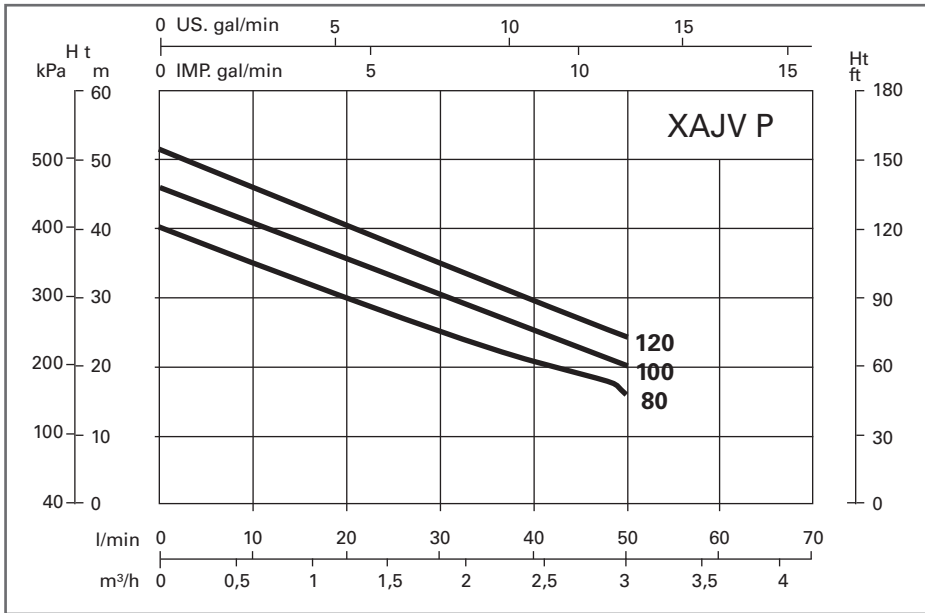
Depth max 5 m

Calibrating pressure rate switch 2.2 bar



	Code	P ₂ Nom.		3 ~ 50Hz Amp.		1 ~ 50Hz Amp.	Cap μF	Q (lt/m) Flow							Dimensions mm						Wgt. kg
		kW	Hp	230 V	400 V	230 V		0	10	20	30	40	50	60	A	N	H	H1	DNM	DNA	
		Total Hm in CA																			
AUTO MONO	XAJV80P	0,60	0,8	-	-	4,5	16	40	33	30	24	20	15	-	505	218	420	46	1"¼	1"	12
	XAJV100P	0,75	1	-	-	5,3	16	47	40	35	30	25	20	5	535	218	420	46	1"¼	1"	12,5
	XAJV120P	0,90	1,2	-	-	5,9	18	51	45	40	34	30	24	8	535	218	420	46	1"¼	1"	13,5
MAN MONO	XJV80P	0,60	0,8	-	-	4,5	16	40	33	30	24	20	15	-	505	218	420	46	1"¼	1"	12
	XJV100P	0,75	1	-	-	5,3	16	47	40	35	30	25	20	5	535	218	420	46	1"¼	1"	12,5
	XJV120P	0,90	1,2	-	-	5,9	18	51	45	40	34	30	24	8	535	218	420	46	1"¼	1"	13,5
MAN THR	XJV80PT	0,60	0,8	2,2	1,5	-	-	40	33	30	24	20	15	-	505	218	420	46	1"¼	1"	12
	XJV100PT	0,75	1	3	1,9	-	-	47	40	35	30	25	20	5	535	218	420	46	1"¼	1"	12,5
	XJV120PT	0,90	1,2	3,6	2,3	-	-	51	45	40	34	30	24	8	535	218	420	46	1"¼	1"	13,5
AUTO MONO	XAJV80PCE	0,60	0,8	4,5	16	40	33	30	24	20	15	-	-	505	218	420	46	1"¼	1"	12	
	XAJV100PCE	0,75	1	5,3	16	47	40	35	30	25	20	5	-	535	218	420	46	1"¼	1"	12,5	
	XAJV120PCE	0,90	1,2	5,9	18	51	45	40	34	30	24	8	-	535	218	420	46	1"¼	1"	13,5	

Curves and performance $\eta = 2900$ 1/min



CE Versions
With external capacitor kit



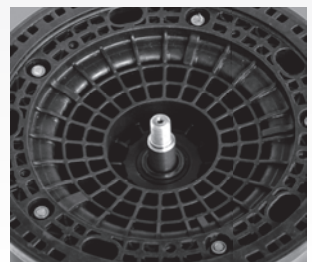
- Cavo elettrico H07RN8-F
- Electric cable H07RN8-F length 9 mt Pump / box
- Electric cable H07RN8-F length 1mt with Schuko plug
- Capacitor box with IP 55 protection class



Woltmann flow sensor



Technopolymer impeller



Technopolymer motor support