

XAMO HF HIGH-FLOW



Horizontal multistage pump with electronic system HIGH-FLOW



Technopolymer check valve with flow control disc and spring in AISI 316 (standard equipment in automatic version)

Description

Up/Down technology for submersed, surface or underground installation.
Automatic system of water supply and dry-running protection.
Antiblocking system every 72 hours of pump inactivity.
Protection rating IP 68 .

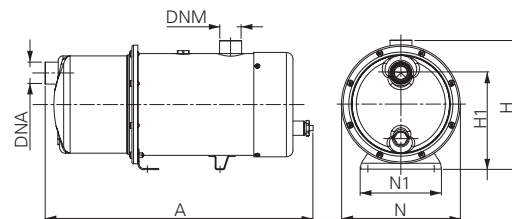
Materials

- Motor body, impellers and pump body: Stainless steel AISI 304
- Technopolymer flange for 1,5HP and 2HP pumps
- Shaft: Stainless steel AISI 420
- Diffuser and impellers: Noryl
- Rear cap: Technopolymer / Stainless steel AISI 304
- Basis: Stainless steel AISI 304
- Dumping feet: Rubber
- Mechanical seal: Graphite / ceramic
- Oil chamber on the mechanical seal
- A2 Stainless steel bolts
- NBR70 O-ring
- H07RN8-F Electric cable 10 m length with Schuko plug
- Tropicalized circuit board in compliance with the RoHS directive
- Class F insulated motors

Applications

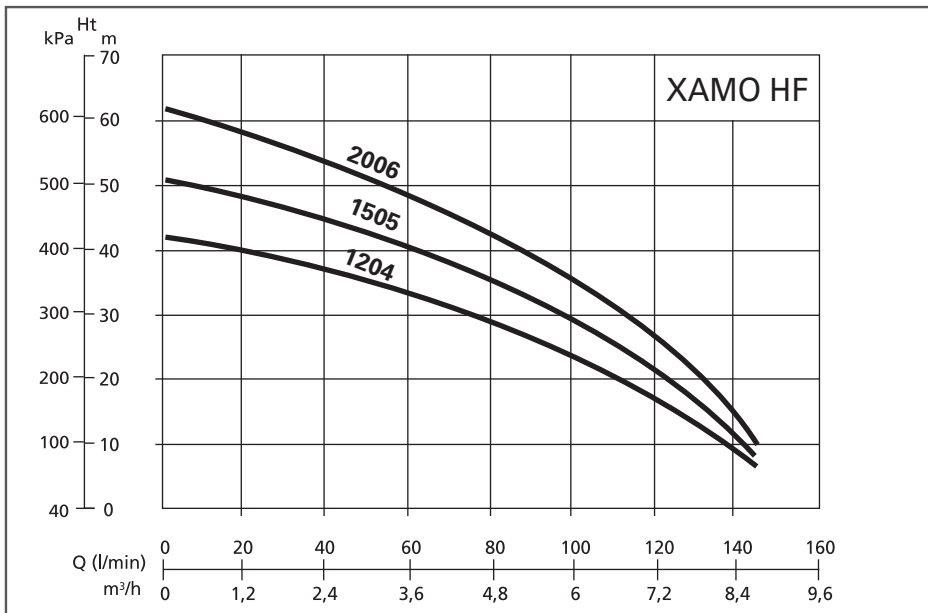
- Domestic boosting
- Medium sprinkling and surface irrigations
- Industrial washing and cooling
- Systems for potable water treatment

Pumped liquid:
Clean water with no abrasive or suspended solids
Liquid temperature +2°C ÷ +40°C
Air temperature max +45°C
Depth max 5 m
Calibrating pressure rate switch 2.2 bar

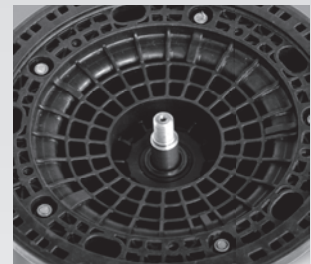


	Code	P ₂ Nom.		3 ~ 50Hz Amp.		1 ~ 50Hz Amp.	Cap μF	Stages	Q (lit/m) Flow							Dimensions mm						Wgt. kg	
		kW	Hp	230 V	400 V	230 V			0	30	50	70	100	120	145	A	H1	H	N	N1	DNM		DNA
		Total Hm in CA																					
AUTO MONO	XAMO1204HFSD	0,90	1,2	-	-	6,4	25	4	43	38	34	30	24	16	6	560	165	226	200	136	1"¼	1"¼	19,5
	XAMO1505HFSD	1,10	1,5	-	-	7,3	30	5	51	46	43	38	30	21	9	715	165	226	200	136	1"¼	1"¼	21,5
	XAMO2006HFSD	1,50	2,0	-	-	10,1	40	6	62	55	51	45	34	24	10	715	165	226	200	136	1"¼	1"¼	23
MAN MONO	XMO1204HFSD	0,90	1,2	-	-	6,4	25	4	43	38	34	30	24	16	6	560	165	226	200	136	1"¼	1"¼	19,5
	XMO1505HFSD	1,10	1,5	-	-	7,3	30	5	51	46	43	38	30	21	9	715	165	226	200	136	1"¼	1"¼	21,5
	XMO2006HFSD	1,50	2,0	-	-	10,1	40	6	62	55	51	45	34	24	10	715	165	226	200	136	1"¼	1"¼	23
MAN THR	XMO1204THFSD	0,90	1,2	3,1	2,2	-	-	4	43	38	34	30	24	16	6	560	165	226	200	136	1"¼	1"¼	19,5
	XMO1505THFSD	1,10	1,5	3,5	2,5	-	-	5	51	46	43	38	30	21	9	715	165	226	200	136	1"¼	1"¼	21,5
	XMO2006THFSD	1,50	2,0	4,2	3,0	-	-	6	62	55	51	45	34	24	10	715	165	226	200	136	1"¼	1"¼	23

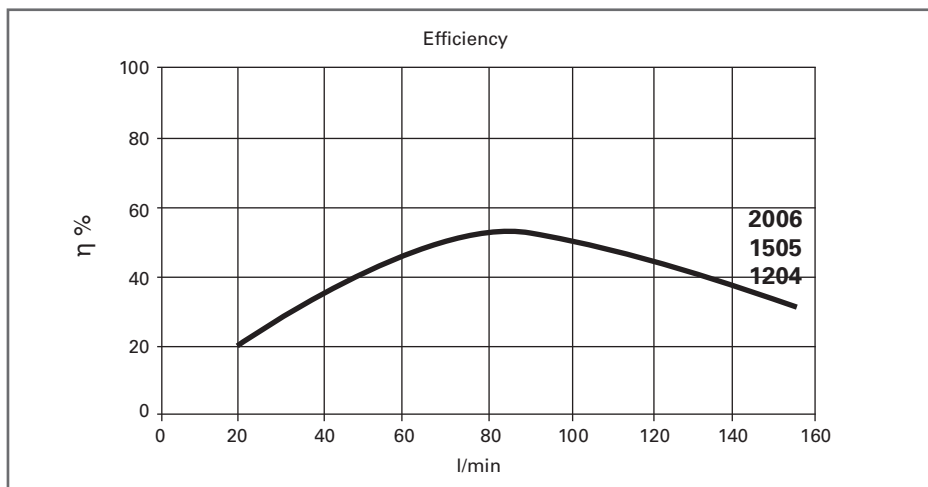
Curves and performance $\eta = 2900$ 1/min



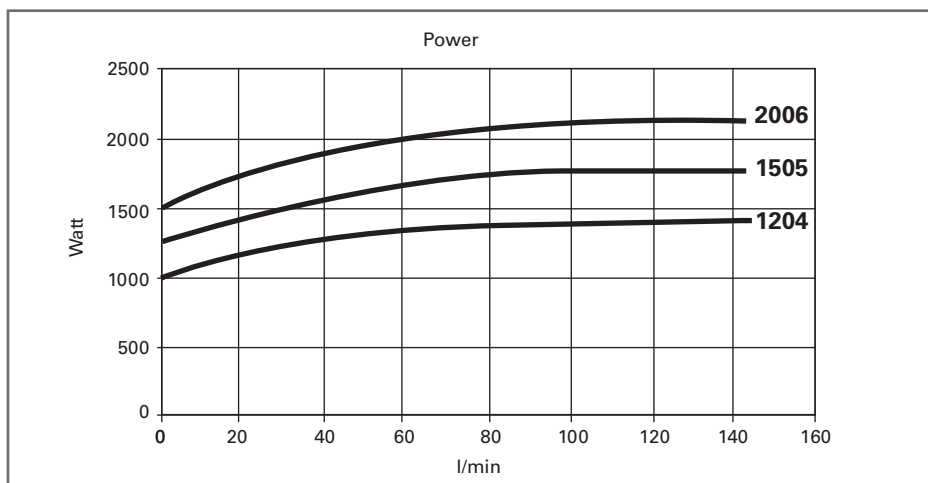
Technopolymer impeller



Technopolymer motor support



Motor body with delivery port



Apartments		
Code	n°	meters
XAMO1204HFSD	6 - 8	4
XAMO1505HFSD	6 - 8	8
XAMO2006HFSD	6 - 8	11